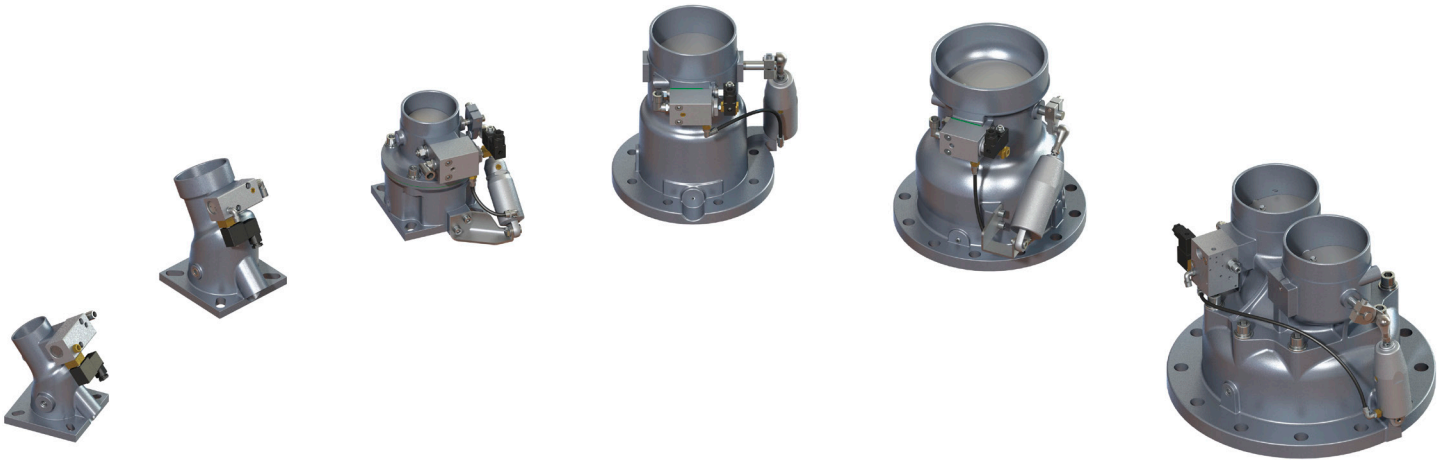


# INTAKE VALVE RB - RBC SERIES

www.vmcitaly.com  
www.vmc-usa.com



## MAIN FEATURES:

- “Normally Closed” (ON-OFF working system) or “Normally Open” (PM-P-NR working systems)
- Vertical inlet manifold
- They include a butterfly operated by a servo-cylinder controlling the air flow-rate and working pressure accordingly
- A check valve preventing backflow of oil at a compressor shutdown
- Blow-down valve setting up the discharge time upon request

## AVAILABLE VERSIONS:

- E (ON-OFF working system for stationary machines),
- PM (totally pneumatic working system for portable machines),

- P (hybrid working system for stationary and portable machines),
- NR (only with a check valve).

They are available at different voltages, if requested, as well as with connection flanges and certifications.

## INSTALLATION:

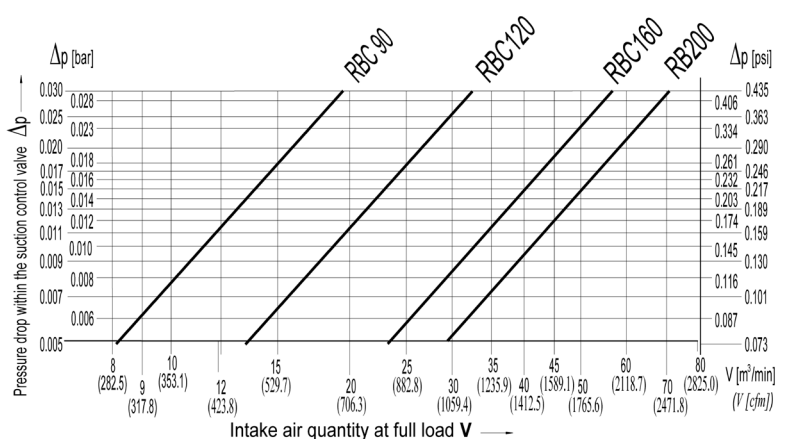
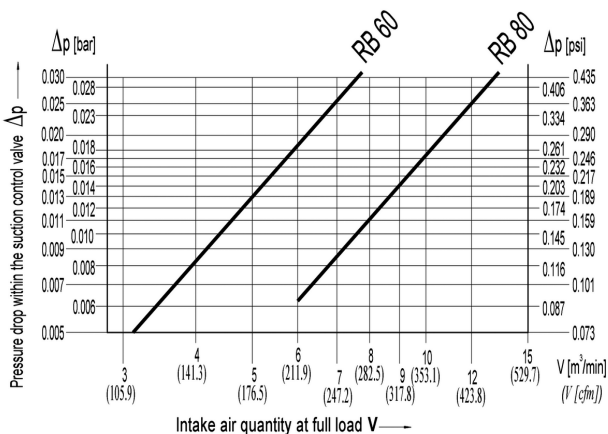
assembled on the inlet port of an air-end housing. These valves have to be connected pneumatically to the separator tank and electrically (in case of E & P versions) to the pressure switch.

## MAINTENANCE:

Specific spare part kits are available for ordinary maintenance.

Intake Valves RB -RBC series are also available for Natural Gas and Water Lubricated applications.

| TECHNICAL DATA         |                              | RB60   | RB80        | RBC90       | RBC120       | RBC160       | RB200              |
|------------------------|------------------------------|--|-------------|-------------|--------------|--------------|--------------------|
| Air flow rate          | m <sup>3</sup> /min -<br>cfm | See diagram  |             |             |              |              |                    |
| Inlet size             | mm - inch                    | Ø60 - Ø2.36  | Ø80 - Ø3.15 | Ø90 - Ø3.54 | Ø120 - Ø4.72 | Ø160 - Ø5.5  | 2xØ140 -<br>2xØ5.5 |
| Working pressure       |                              | up to 16 bar - up to 232 Psi   |             |             |              |              |                    |
| Solenoid valve voltage |                              | 24V or 110V or 230V  |             |             |              |              |                    |
| Materials              |                              | Housing in Aluminium alloy. Internal parts in Aluminium alloy anodized, Viton sealings, and Brass. |             |             |              |              |                    |
| Weight                 | Kg - lb                      | 2,2 - 4.85   | 3 - 6.6     | 5,8 - 12.78 | 9,8 - 21.6   | 13,3 - 29.32 | 25,3 - 55.77       |



# INTAKE VALVE RB - RBC SERIES

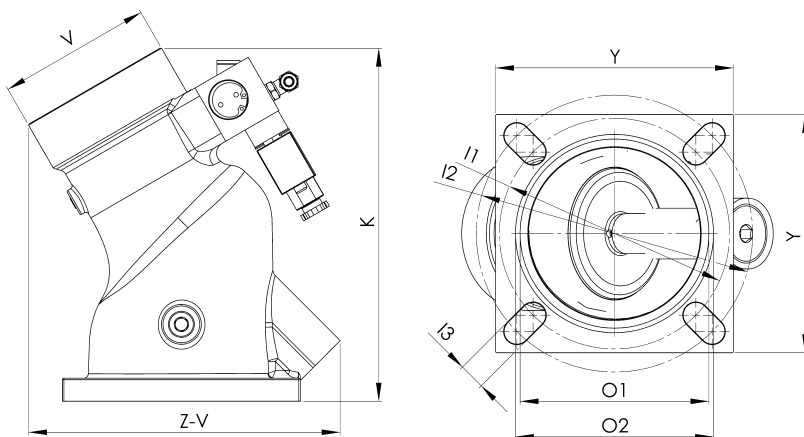
www.vmcitaly.com  
www.vmc-usa.com



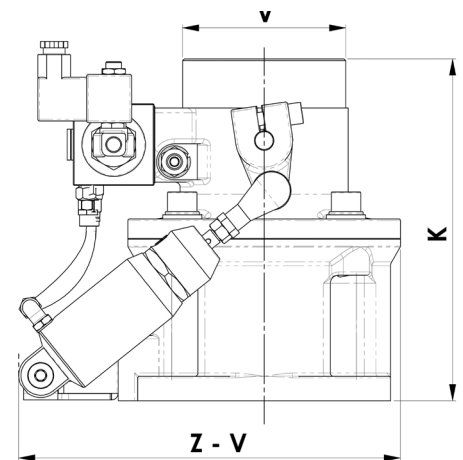
| DIMENSION  |         | RB60R        | RB60T        | RB60GTr      | RB80         | RBC90        | RBC120        |              | RBC160       | RB200           |
|------------|---------|--------------|--------------|--------------|--------------|--------------|---------------|--------------|--------------|-----------------|
| Bolt holes | Nr.     | 4            | 4            | 4            | 4            | 4            | 8             |              | 12           | 12              |
| Y          | mm-inch | 125 - 4,92   | 135 - 5,3    | 135 - 5,3    | 155 - 6,1    | 155 - 6,1    | Ø255 - Ø10,04 |              | Ø330         | Ø460 - Ø18,1    |
| Z-V        | mm-inch | 177 - 6,96   | 177 - 6,96   | 177 - 6,96   | 203 - 8      | 225 - 8,85   | 318 - 12,51   |              | 350          | 500 - 19,68     |
| K          | mm-inch | 197 - 7,75   | 197 - 7,75   | 197 - 7,75   | 230 - 9,05   | 210 - 8,26   | 308 - 12,13   |              | 332          | 350 - 13,77     |
| V          | mm-inch | Ø70 - Ø2,75  | Ø70 - Ø2,75  | Ø70 - Ø2,75  | Ø100 - Ø3,93 | Ø100 - Ø3,93 | Ø150 - Ø5,91  |              | Ø201         | 2xØ150 - 2xØ5,9 |
| I1         | mm-inch | Ø110 - Ø4,33 | Ø129 - Ø5,07 | -            | Ø150 - Ø5,9  | Ø160 - Ø6,3  | Ø225 - Ø8,86  | Ø240 - Ø9,44 | Ø295         | Ø410 - Ø16,14   |
| I2         | mm-inch | Ø135 - Ø5,3  | Ø150 - Ø5,9  | Ø150 - Ø5,9  | Ø180 - Ø7,1  | Ø180 - Ø7,1  | -             |              | -            | -               |
| I3         | mm-inch | Ø13 - Ø0,51  | Ø13 - Ø0,51  | Ø17 - Ø0,67  | Ø17 - Ø0,67  | Ø17 - Ø0,67  | Ø17 - Ø0,67   | Ø21 - Ø0,82  | Ø21 - Ø0,82  | Ø25 - Ø0,98     |
| O1         | mm-inch | Ø86 - Ø3,38  | Ø107 - Ø4,21 | Ø107 - Ø4,21 | Ø123 - Ø4,84 | Ø127 - Ø5    | Ø195 - Ø7,68  |              | Ø248 - Ø9,76 | Ø329,5 - Ø12,97 |
| O2         | mm-inch | Ø92 - Ø3,62  | Ø113 - Ø4,45 | Ø113 - Ø4,45 | Ø129 - Ø5,07 | Ø133 - Ø5,23 | Ø203 - Ø8     |              | Ø259 - Ø10,2 | Ø341,5 - Ø13,44 |

ATTENTION: The drawing below is not suitable for all models. Please log on to our website for specific drawings.

## RB60 - RB80



## RBC90



## RBC120 - RBC160 - RB200

